

New dimensions on your desktop.



# Dell Wyse D class cloud clients.

Dell Wyse D class cloud clients.  
[Learn more. Here:](#)



# The new Dell Wyse D class: Strong. Compact. Affordable.

## The new Dell Wyse D class.

The range features dual core processors throughout with the D90D7 for Windows Embedded Standard 7, the D90DW for Windows Embedded Standard 2009, the D50D for Dell Wyse-enhanced SUSE Linux and the D00D for Dell Wyse WSM.\*



### D50D

Featuring Dell  
Wyse enhanced  
SUSE Linux



### D90DW

Featuring  
Windows  
Embedded  
Standard 2009.



### D90D7

Featuring  
Windows  
Embedded  
Standard 7.



### D00D

Dual core  
cloud PC for  
Dell Wyse WSM.



\* Check with [wyse.com](http://wyse.com) for availability of models and up to the minute information on specifications and certifications.



Start

Models

Features

Technical

Contact

Print

# Features new Dell Wyse D class.

Designed to allow your users to flourish within ever changing and demanding desktop environments, the new Dell Wyse D class offers you new dimensions in computing performance, high definition multimedia and operational flexibility in a compact affordable form.

The D class' compact frame hosts an array of display, peripheral and network connectivity plus further flexible networking, storage and I/O options; everything in fact to offer you the ideal cloud client for Citrix, Microsoft and VMware VDI environments.

Dell Wyse Device Manager supports the D class with scalable enterprise-wide management. From fast 'day one' out-of-the-box deployment, to patching and updates and on to granular desktop device management – all with secure end-to-end encrypted communications.

When it comes to energy efficiency the D class is designed to out-perform other more power hungry desktop alternatives, including other thin clients in its class. Its silent, disk and fan-less design contributes considerably to lowering an organization's carbon footprint through power usage and emissions.

## Cloud Clients

Performance



Connectivity



Mounting options



Green



Dell Wyse Enhanced  
SUSE Linux



Microsoft Windows  
Embedded Standard 2009

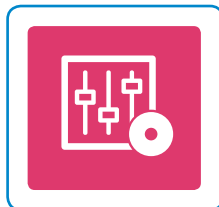


Microsoft Windows  
Embedded Standard 7



## Software

Management



User Experience  
Optimization



User Experience  
Acceleration



Take a tour of the  
Dell Wyse D class range



Start

Models

Features

Technical

Contact

Print

# Your all around high performer.

## Presenting high performance on your desktop.

Need to deploy a dependable platform to display, manipulate and work with high definition multimedia, voice and video in a virtualized environment? The D class' hardware acceleration engine and dual monitor support offers your users outstanding performance and display capabilities across 2D, 3D and HD video applications.

### High performance processor.

Driving the D class' high speed and performance is a powerful energy-saving AMD G-Series Dual core T48E 1.4 GHz processor, offering you a strong all around platform on which to support an increasingly diverse range of user, application and operating requirements.



Continue tour



Start

Models

Features

Technical

Contact

Print

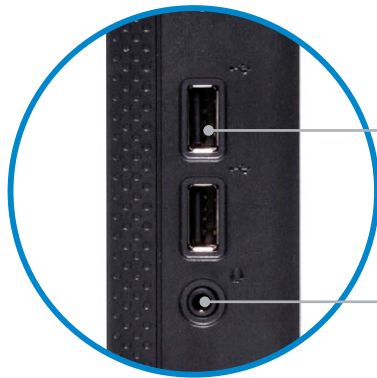
wyse.com



# Connectivity Fast and flexible.

Dell Wyse D50D, D90DW and D90D7 thin clients and D00D cloud PC.

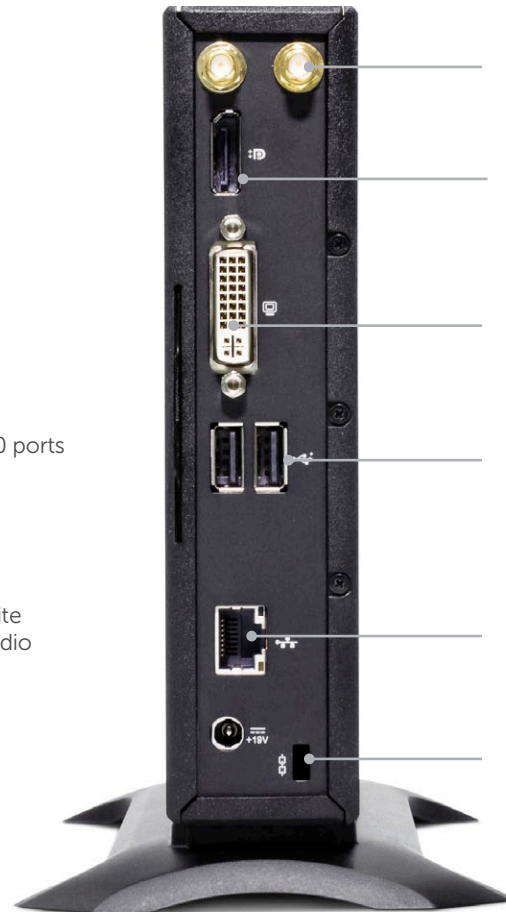
Standard configuration.



Front panel connectivity

2 USB 2.0 ports

Composite digital audio



Dual Band 802.11 a/b/g/n Wireless (factory option)

DisplayPort

DVI-I port

2 USB 2.0 ports

RJ45 or SFP Module

Kensington lock slot



Rear view with Wireless option



Rear view with Fiber NIC option

Optional wireless antenna

Optional Fiber NIC port



Some features require local OS support and may not be available with all OSs.

Continue tour



Start

Models

Features

Technical

Contact

Print

# Mounting options.

The Dell Wyse D class family can be placed vertically or horizontally on desktops and mounted to your monitors.



## Vertical.

Each D class is supplied as standard with feet for vertical use.



## Monitor mounting.

An optional Dell Ergotron mounting arm enables mounting to the rear of a monitor.

Continue tour



Start

Models

Features

Technical

Contact

Print

# Energy conscientious



## That's Dell Wyse EarthSmart computing.

With Dell Wyse D class and through our EarthSmart Computing initiative we are committed to helping organizations implement an energy efficient computing strategy – one that offers a more efficient and productive computing experience for your users with a positive effect on energy wastage, heat and carbon emissions.

### Energy efficient.

Dell Wyse D class cloud clients use 9 watts of power in typical use\*. In comparison, a typical PC could use between 70 and 150 watts. Even in sleep mode Dell Wyse D class units draw just 2 watts while being fully remotely managed.

Then, when you include additional power requirements in the data center, a cloud computing deployment can offer significant power savings.

Dell Wyse has implemented an ISO 14001-based environmental management system and WEEE recycling processes, and all Dell Wyse products meet stringent ROHS requirements.

### Learn more.

Download carbon calculators, fact sheets and white papers from here: [www.wyse.com/green](http://www.wyse.com/green)

\* Average power usage with device connected to 1 keyboard with 1 PS/2 mouse and 1 monitor: Under 9 Watts

Continue tour



Start

Models

Features

Technical

Contact

Print

# Operating Systems Dell Wyse enhanced SUSE Linux

**Dell Wyse enhanced SUSE Linux Enterprise is a simple, secure, and easy to manage platform designed for customers looking for flexibility and support of the latest protocols (ICA, PCoIP, RDP, etc) without the need for a Windows-based thin client.**

## **Simple “Hands-Off” Management.**

Deploying, managing, and updating Dell Wyse enhanced SUSE Linux is easy. Utilizing Dell Wyse’s established automatic update and configuration approach, management tasks can be handled centrally and easily without any management software required.

Updating 1 or 1,000 thin clients is as simple as dragging and dropping a file into a folder.

For customers that desire a little more hands-on approach (such as asset tracking, reporting, etc) then integration with Dell Wyse Device Manager is built-in.

## **Security.**

Dell Wyse enhanced SUSE Linux is designed with security in mind. IT Managers are able to provide a locked-down experience, smartcard login to virtual environments, VPN connectivity, and leverage a read-only file system that helps protect against data loss, theft and virus attacks.



## **Enterprise-quality Linux optimized by Dell Wyse**

Dell Wyse enhanced SUSE Linux is the only enterprise-quality Linux platform optimized for thin computing, created by combining the security and flexibility of SUSE Linux with Dell Wyse’s cloud client computing leadership and innovation in user experience and simplified management. Additionally, SUSE Linux Enterprise is the only Linux platform to protect customers from potential IP infringement suits as it is jointly indemnified by SUSE Linux and Microsoft.

## **Flexible, Multi-Protocol Support.**

Being built from a standard enterprise-quality Linux distribution means the Dell Wyse enhanced SUSE Linux supports a wide range of protocols and infrastructures straight-out-of-the-box including Citrix, Microsoft, VMware and Ericom PowerTerm InterConnect Terminal Emulation – allowing you to mix-and-match connections from a single image.

## **That’s Dell Wyse enhanced SUSE Linux.**

The only enterprise-quality Linux platform optimized by Dell Wyse for thin client computing.

Continue tour



Start

Models

Features

Technical

Contact

Print



# Operating Systems Microsoft Windows Embedded Standard 2009

## Running Windows Embedded Standard on Dell Wyse thin clients offers IT departments the ability to deploy fully functional desktop clients with better manageability and significantly lower total cost of ownership than personal computers.

Dell Wyse Windows Embedded Standard 2009-based thin clients can run 32 bit Microsoft Windows applications, either locally or from servers, with the inbuilt flexibility to add and support a host of desktop peripherals with permission from the IT administrator.

Full support is provided for RDP 7.0, Citrix ICA 11.2, VMware View 4.0.1, Ericom PowerTerm WebConnect, Ericom PowerTerm InterConnect Terminal Emulation and Internet Explorer 8. In addition, all Dell Wyse Windows Embedded Standard 2009 thin clients include support of Windows Embedded Device Manager, allowing the device to be managed by Microsoft's central management system for Windows-based devices, System Center Configuration Manager\*.

### Secure write-protected thin client desktops

This robust and flexible operating system is further enhanced by the Dell Wyse file-based Write Filter that enables you to protect the files, folder and/or entire volumes from accidental changes or user customization. On rebooting, the thin client simply returns to its original state thus preventing any possible damaging modification either from users or malware.

## Dell Wyse customized image support

Dell Wyse technicians are prepared to help you customize Windows Embedded Standard 2009 to your exact requirements in order to create custom-built images for subsequent enterprise-wide deployment, management and update through Dell Wyse Device Manager.

### Contact your Dell Wyse Partner for further details



Start

Models

Features

Technical

Contact

Print

Continue tour



wyse.com

# Operating Systems Microsoft Windows Embedded Standard 7

**New Windows Embedded Standard 7 delivers a wealth of enhanced deployment, user experience and management benefits to Dell Wyse desktops, mobiles and thin clients deployed across an organization's virtualized network.**

## Rich user experience

Wherever they are – deskbound or mobile – with Microsoft Windows Embedded Standard 7 your users can benefit from the rich user experience of the Aero interface and the power, familiarity and reliability of the Windows 7 operating system in a highly customizable and componentized form.

Full support is provided for Remote Desktop Protocol (RDP) 7.1 with RemoteFX technology to provide seamless connectivity to Windows Server 2008 R2 and virtual desktop infrastructure scenarios. The Dell Wyse-enhanced Windows Embedded Standard 7 platforms include additional features supporting the latest Citrix Online Plug-in and VMware View 4.6 to fit the needs of your most sophisticated users and making it an optimum OS for organizations wanting broad support for cloud computing and desktop virtualization. Citrix Online Plug-in provides the HDX user experience and View 4.6 provides localization and Virtual Printing.

The platform also features additional Windows technology innovations to drive rich, immersive user experiences, including Internet Explorer 8. There's full support and inbuilt flexibility too, to add and support a host of desktop peripherals with permission from the IT administrator.

In addition, all Dell Wyse Windows Embedded Standard 7 thin clients include support of Windows Embedded Device Manager, allowing the device to be managed by Microsoft's central management system for Windows-based devices, System Center Configuration Manager.

## Easy to manage and deploy

Now, with Windows Embedded Standard 7, deploying 32-bit capable thin clients is easier and more manageable than ever before and reflects the direct working relationship between Dell Wyse and Microsoft. The support for Domain Join and group policies through Active Directory, help with management and integration of thin clients into existing desktop management infrastructures.

Dell Wyse Configuration Manager (WCM) offers unprecedented simplicity to the management of virtual desktops by allowing IT departments to auto-configure thin clients running Dell Wyse-enhanced Windows Embedded Standard. By automating the deployment of Windows Embedded Standard thin clients throughout a private cloud WCM offers multiple benefits to organizations: reducing the need to do imaging, deploying custom images and fast configuration updates. Client devices are updated with the latest configuration settings for VDI connections (RDP, Citrix, VMware View), device settings and OS configuration automatically when devices startup.

Dell Wyse Device Manager (WDM) addresses key management requirements. With its centralized management and administration, WDM helps IT departments deliver effective remote thin client support while minimizing end user downtime. In addition, the Dell Wyse USB Firmware Tool allows IT and Customer Service staff to quickly and easily image the devices directly.



## Enterprise-wide consistency

Windows Embedded Standard 7 and Dell Wyse provide the ideal, cost effective opportunity to deploy a consistent, high performance operating system across Dell Wyse cloud clients.

[Continue tour](#)



Start

Models

Features

Technical

Contact

Print

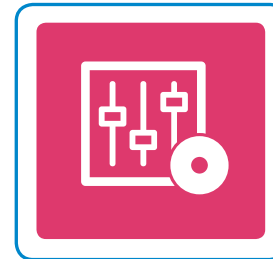
# Thin client management Dell Wyse Device Manager

Dell Wyse Device Manager (WDM) addresses key management requirements for deploying powerful thin clients. With its centralized management and administration WDM helps IT departments deliver effective remote thin client support while minimizing end user downtime.

**Security is assured with HTTPS based imaging, updates and downloads.**

## WDM delivers organization-wide benefits:

<b>Operations</b>	Centralized management. Collect and organize asset information.
<b>Administration</b>	Health status reports. Automated client settings. Update client firmware and add applications.
<b>End User IT Costs</b>	Easy, effective remote support. Create custom scripts and packages.
<b>Minimize downtime</b>	Restart or reset thin clients in less than a minute. Enforce policies. Minimize user errors.



## At a glance features

- **Security**
  - HTTPS based imaging / updates
  - Fully encrypted network traffic
  - Delegated admin access (MS AD) support
- **No-Hassle deployment**
  - Complete device imaging / patching / updates
  - Bandwidth throttling for efficiency / reliability
  - Software updates and add-ons
- **Device administration and monitoring**
  - Device health status / reporting
  - Remote shadowing / control
  - Default device configuration
- **Reduce end user IT costs**
  - Reduce energy consumption with scheduled up/down times
- **Scalability**
  - Distributed architecture
  - Microsoft SQL database support
  - Multiple remote repository support
- **Complete asset visibility**
  - Automated device discovery
  - Detailed hardware asset information
  - Installed software asset information

Continue tour



Start

Models

Features

Technical

Contact

Print

# User Experience Optimization Dell Wyse TCX Suite

with Collaborative Processing Architecture

## Dell Wyse TCX delivers an optimal user experience in one software suite.

Dell Wyse TCX Suite of virtualization software enriches the user experience by removing the limitations previously associated with thin clients. It enhances, not replaces, key protocols like ICA/HDX and RDP by adding key features to help make each more valuable.



### Multi-display

Ensures application windows and dialog boxes are multi-monitor aware when using more than one monitor.

### USB Virtualization

Enables plug and play peripheral support for virtual desktop environments.

- Redirect and use local USB devices in virtual desktops.
- Deploy virtual desktops to knowledge workers with special device access needs.
- Enable a broad set of USB peripherals including webcams and headsets.

### Multimedia acceleration

Streamlines the delivery of video and audio content to the local client for a rich user experience within a thin client computing architecture.

- Accelerates Mpeg1, Mpeg2, WMV, Mpeg4 Part 2, AC3, AAC, MP3, WAV, WMA media types.
- Collaborative Processing Architecture enhances server scalability, and network utilization by off-loading multimedia rendering to the client.

### Flash acceleration

Flash acceleration helps thin client users to experience improved Flash video performance. While the Flash player continues to run server-side, the resulting images are transcoded and redirected to the client for fast rendering. The technology allows for greater control of frame rate and compression and supports enhanced playback of YouTube-style flash videos in Internet Explorer.

### Bi-directional sound

Enables bi-directional audio in virtual desktop environments, enabling solutions such as VOIP, digital dictation or voice recognition to be deployed.



Start

Models

Features

Technical

Contact

Print

Continue tour



wyse.com



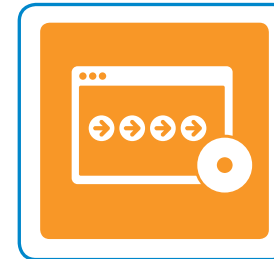
# Virtualization Software Dell Wyse VDA

## Removing the barriers of network latency.

Dell Wyse Virtual Desktop Accelerator (VDA) enables virtualized desktop and thin computing environments to be deployed to areas where network latency has, to date, presented operational barriers. Now, with Dell Wyse VDA, more users can receive the full benefits of Dell Wyse thin computing – with outstanding PC experience over virtualized desktops.

Dell Wyse VDA is a software-only solution for Dell Wyse thin clients and supported PCs that delivers exceptional user experience for the allocated network bandwidth by neutralizing the effects of network latency and packet loss. Making 'thin' suitable for more remote-site, branch, or field-based users.

Dell Wyse VDA works with instead of replacing existing RDP and ICA protocols, and is designed to offer significant acceleration over certain capacity-constrained WAN links.



## At a glance features

- Software-only acceleration of virtual desktops and applications
- Accelerates existing Citrix ICA and Microsoft RDP protocols
- Works on WANs and 'fat, long pipes'
- Accelerates connections to Citrix XenApp, Citrix XenDesktop, VMware View and Microsoft Terminal Server and Microsoft Hyper-V VDI
- Enhances Dell Wyse TCX software suite functionality across wide-area networks
- Enables Dell Wyse Collaborative Processing Architecture across wide-area networks
- Administrator console provides control of maximum bandwidth per connection
- Leverages built-in security of underlying protocols (128-bit encryption for RDP and ICA).

Continue tour



Start

Models

Features

Technical

Contact

Print

# Technical Dell Wyse D class cloud client specifications.

The range features the D90D7 for Windows Embedded Standard 7, the D90DW for Windows Embedded Standard 2009, the D50D for Dell Wyse enhanced SUSE Linux and the D00D cloud PC for Dell Wyse WSM.

Want to learn more? Simply click the icons.

## Cloud clients

Dell Wyse D class specifications



Dell Wyse Enhanced SUSE Linux



Microsoft Windows Embedded Standard 2009



Microsoft Windows Embedded Standard 7



Learn about Dell Wyse WSM at [www.wyse.com/products/software/cloud/WSM](http://www.wyse.com/products/software/cloud/WSM)



Start

Models

Features

Technical

Contact

Print

# Specifications Dell Wyse D50D, D90DW and D90D7 thin clients and D00D cloud PC.

Operating System	Dell Wyse Windows® Embedded Standard 7, Windows® Embedded Standard 2009 or Dell Wyse-enhanced SUSE Linux Enterprise
Processor	AMD G-Series Dual core T48E 1.4GHz with AMD Radeon™ HD 6250 Graphics
Memory	D50D 2GB Flash / 2GB DDR3 RAM D90DW 2GB Flash / 2GB DDR3 RAM D90D7 4GB Flash / 2GB DDR3 RAM D00D 0GB Flash / 2GB DDR3 RAM Expandable up to 8GB Flash / 4GB DDR3 RAM
I/O peripheral support	One DisplayPort. (Optional DisplayPort to DVI-I adapter available) One DVI-I port. DVI to VGA (DB-15) adapter included Four External USB 2.0 ports (2 front; 2 back) Serial and Parallel connectivity supported through USB 2.0 adapters Enhanced USB Keyboard with Windows Keys (104 keys) and PS/2 mouse port. PS/2 Optical mouse included.
Networking	10/100/1000 Base-T Gigabit Ethernet RJ45 or SFP Module <b>Factory options:</b> Single and Dual Band 802.11 a/b/g/n integrated Wireless with external dual antenna SFP Module support for Fiber NIC network connectivity Bluetooth connectivity
Display	VESA monitor support with Display Data Control (DDC) for automatic setting of resolution and refresh rate DisplayPort: 2560x1600@32bpp DVI-I: 1920x1200@32bpp Dual display: 1920x1200@32bpp
Audio	Composite Audio Jack: 1/8-inch mini, 16-bit stereo. Internal Mono speaker.

Physical characteristics	Height: 6.7 inches (170mm) Width: 1.6 inches (40mm) Depth: 7.3 inches (185mm)
Weight	2.05 lbs. / 0.93 kg
Mountings	Vertical feet standard. Horizontal feet optional. Optional Dell Ergotron mounting bracket.
Device Security	Built-in Kensington security slot (cable sold separately)
Power	Worldwide auto-sensing 100–240 VAC, 50/60 Hz 65W, 19V DC. Energy Star V.5.0 Phase V external and EuP compliant power adapter Average power usage with device connected to 1 keyboard with 1 PS/2 mouse and 1 monitor: Under 9 Watts
Temperature Range	Operating: 32° to 104° F (10° to 40° C), horizontal and vertical positions. Storage: 14° to 140° F (-10° to 60° C)
Humidity	20% to 80% condensing 10% to 95% non-condensing
Safety Certifications	German EKI-ITB 2000, ISO 9241-3/-8 cULus 60950, TÜV-GS, EN 60950 FCC Class B, CE, VCCI, C-Tick WEEE, RoHS Compliant
Warranty	Three-year limited Wyse hardware warranty



- Start
- Models
- Features
- Technical**
- Contact
- Print

# Software specifications Dell Wyse enhanced SUSE Linux

<b>Firmware features</b>	<p>Dell Wyse enhanced SUSE Linux based on SLED 11 SP1          Automatic Central Configuration (text-based INI's)          Automatic Upgrades (FTP, HTTP, HTTPS)          Secure, read-only file system with lockdown abilities          Dell Wyse RDP client (RDP7 Compatible)          Citrix Online Plugin 11.2 client (ICA 11.2) w/ HDX Mediastream, Plug-n-Play, Realtime, etc.          VMware View Open Client compatible with View 4.5          Ericom PowerTerm InterConnect Terminal Emulation          Ericom PowerTerm WebConnect          Cisco, Juniper, Nortel, IPSEC VPN Support (Add-ons)          Local/Remote Printing support (CUPS, LPR/LPD, Samba, ThinPrint,etc)          Web-based applications (Firefox, Flash, JAVA,etc)          XDMCP / SSH</p>	<b>Wireless support</b>	<p>WPA Personal, WPA2 Personal, WPA Enterprise          WPA Enterprise Authentication support          PEAP/TLS: PAP/MSCHAP/MSCHAPV2 support</p>
<b>Server OS Infrastructure support</b>	<p>Citrix XenApp / Citrix Presentation Server          Citrix XenDesktop          VMware View          Microsoft Windows Terminal Server 2003 &amp; 2008</p>	<b>Dell Wyse TCX Suite</b>	<p>Advanced support for innovative Dell Wyse TCX Suite virtualization software that both works with and enhances ICA and RDP (instead of replacing them) featuring:</p> <ul style="list-style-type: none"> <li>- Multimedia acceleration - the power to run rich multimedia files formats utilizing Dell Wyse Collaborative Processing Architecture (CPA) that intelligently redirects the necessary processing tasks between the thin client and the server.</li> <li>- Multi-display - ensures that windows and dialogue boxes behave the way users expect when using more than one monitor.</li> <li>- USB Virtualization - makes thin client-attached USB devices visible to virtual desktops and applications, with full IT control.</li> <li>- Bi-directional sound - enables virtual desktops and applications to receive and transmit high quality audio without compromise.</li> <li>- Flash acceleration - helps users of thin clients to experience improved Flash performance.</li> </ul>
<b>Keyboard language support</b>	<p>100+ Keyboard Layouts supported locally (English, German, Spanish, French, Italian, Dutch, Chinese, Japanese, Turkish)</p>	<b>Dell Wyse Virtual Desktop Accelerator</b>	<p>Dell Wyse VDA works with instead of replacing existing RDP and ICA protocols, and is designed to offer significant acceleration over certain capacity-constrained WAN links.</p>
<b>Management</b>	<p>Automatic, "hands-off" configuration and upgrading of thin clients without the need for device management software. Optionally, administrators can choose to integrate with Dell Wyse Device Manager (WDM) for more hands-on control:</p> <ul style="list-style-type: none"> <li>- Complete image upgrade</li> <li>- Wake terminal remotely (Wake-on LAN)</li> <li>- Remote screen shadowing of entire desktop (VNC)</li> <li>- Asset management and reporting</li> </ul>		





# Software specifications Microsoft Windows Embedded Standard 2009

<b>Firmware features</b>	Microsoft Windows Embedded Standard 2009 Microsoft Internet Explorer 8.0 resident: HTML, JavaScript, XML, Active X Sun JRE, Media Player, Citrix Web Interface RDP 7.0 resident Citrix Online Plugin 11.2 resident (ICA 11.2) VMware View 4.0.1 client resident Ericom PowerTerm InterConnect Terminal Emulation Ericom PowerTerm WebConnect client Windows Media Player 11, .NET 3.5
<b>Server OS Infrastructure Support</b>	Citrix XenApp / Citrix Presentation Server / Citrix XenDesktop VMware View Ericom PowerTerm WebConnect Microsoft Windows Terminal Server 2003 & 2008
<b>Application Framework</b>	.Net 3.5
<b>Security</b>	File Based Write Filter (FBWF) Microsoft Baseline Security Analyzer (MBSA)
<b>Set-up and Configuration</b>	Boot from local flash Microsoft Windows Embedded Standard 7 user interface languages: U.S, Optional add-ons
<b>Keyboard language support</b>	U.S. English (standard), French, German, Spanish, U.K. English, 40 other languages included
<b>Protocol Support</b>	TCP/IP, DNS, DHCP, PXE
<b>Management</b>	Remote management, configuration, and upgrades through Dell Wyse Device Manager Complete image upgrade Wake terminal remotely (Wake-on LAN) Terminal configuration (IP information, name, etc.) Remote screen shadowing of entire desktop (Dell Wyse Remote Shadow) Reporting, Asset management / SMS / Altiris Native Windows Embedded Device Manager support for management via System Center Configuration Manager

<b>Wireless support</b>	802.11 a/b/g/n support with dual band external wireless adapter or single band internal wireless adapter option WPA-2, WEP, WPA wireless authentication PEAP-GTC wireless authentication protocol with optional Juniper Odyssey Client Supports PC-Card wireless adapters* from: Cisco, D-Link, Netgear, US Robotics, Trendware
<b>Plug-ins</b>	Adobe Flash Player / Adobe Shockwave Microsoft Silverlight
<b>Dell Wyse TCX Suite</b>	Advanced support for innovative Dell Wyse TCX Suite of virtualization software that both works with and enhances ICA and RDP (instead of replacing them) featuring: <ul style="list-style-type: none"> <li>- Multimedia acceleration - the power to run rich multimedia files formats utilizing Dell Wyse Collaborative Processing Architecture (CPA) that intelligently redirects the necessary processing tasks between the thin client and the server.</li> <li>- Multi-display - ensures that windows and dialogue boxes behave the way users expect when using more than one monitor.</li> <li>- USB Virtualization - makes thin client-attached USB devices visible to virtual desktops and applications, with full IT control.</li> <li>- Bi-directional sound - enables virtual desktops and applications to receive and transmit high quality audio without compromise.</li> <li>- Flash acceleration - helps users of thin clients to experience improved Flash performance.</li> </ul>
<b>Dell Wyse Virtual Desktop Accelerator</b>	Dell Wyse VDA works with instead of replacing existing RDP and ICA protocols, and is designed to offer significant acceleration over certain capacity-constrained WAN links.
	*requires hardware support



# Software specifications Microsoft Windows Embedded Standard 7

<b>Firmware features</b>	Microsoft Windows Embedded Standard 7 Microsoft Internet Explorer 8.0 resident: HTML, JavaScript, XML, Citrix Web Interface Microsoft RDP 6.1 client (Protocol 7.1 Supported) with RemoteFX technology Citrix Online Plugin 12 resident (ICA 12) with HDX Citrix XenDesktop VMware View 4.6 client resident Ericom PowerTerm InterConnect Terminal Emulation Windows Media Player 12
<b>Server OS Infrastructure support</b>	Citrix XenApp / Citrix Presentation Server Citrix XenDesktop VMware View Microsoft Windows Terminal Server 2003 & 2008 R2 MSFT VDI
<b>Security</b>	File Based Write Filter (FBWF)
<b>Set-up and configuration</b>	Boot from local flash Microsoft Windows Embedded Standard 7 user interface languages: U.S, Optional add-ons
<b>Keyboard language support</b>	U.S. English (standard), French, German, Spanish, U.K. English, 40 other languages included
<b>Protocol support</b>	TCP/IP, DNS, DHCP, PXE
<b>Management</b>	Auto-configuration with Dell Wyse Configuration Manager Remote management, configuration, and upgrades through Dell Wyse Device Manager Complete image upgrade Terminal configuration (IP information, name, etc.) Reporting, Asset management Simple USB imaging solution with Dell Wyse USB Firmware Tool Native Windows Embedded Device Manager support for management via System Center Configuration Manager

<b>Wireless support</b>	802.11 a/b/g/n support with dual band external wireless adapter or single band internal wireless adapter option WPA-2, WEP, WPA wireless authentication PEAP-GTC wireless authentication protocol with optional Juniper Odyssey Client Supports PC-Card wireless adapters* from: Cisco, D-Link, Netgear, US Robotics, Trendware
<b>Plug-ins</b>	Adobe Flash Player Microsoft Silverlight
<b>Dell Wyse TCX Suite</b>	Advanced support for innovative Dell Wyse TCX Suite virtualization software that both works with and enhances ICA and RDP (instead of replacing them) featuring: <ul style="list-style-type: none"> <li>- Multimedia acceleration - the power to run rich multimedia files formats utilizing Dell Wyse Collaborative Processing Architecture (CPA) that intelligently redirects the necessary processing tasks between the thin client and the server.</li> <li>- Multi-display - ensures that windows and dialogue boxes behave the way users expect when using more than one monitor.</li> <li>- USB Virtualization - makes thin client-attached USB devices visible to virtual desktops and applications, with full IT control.</li> <li>- Bi-directional sound - enables virtual desktops and applications to receive and transmit high quality audio without compromise.</li> <li>- Flash acceleration - helps users of thin clients to experience improved Flash performance.</li> </ul>
<b>Dell Wyse Virtual Desktop Accelerator</b>	Dell Wyse VDA works with instead of replacing existing RDP and ICA protocols, and is designed to offer significant acceleration over certain capacity-constrained WAN links.
	*requires hardware support





# Contact Dell Wyse.

## Dell Wyse

3471 North First Street,  
San Jose,  
CA 95134-1801

## Visit our website at:

<http://www.wyse.com> or send  
an email to: [sales@wyse.com](mailto:sales@wyse.com)

## Dell Wyse Sales

800 GET WYSE (800 438 9973)

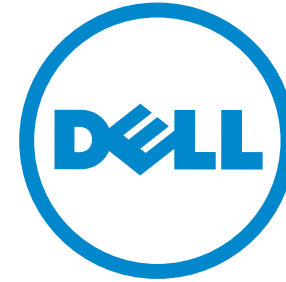
## International customers please dial:

00 1 408 473 1200

## Dell Wyse Support Portal

Dell Wyse Support Portal provides a fast and  
accurate way to communicate interactively  
with Dell Wyse Customer Support, and helps  
us respond to your requests more quickly.

<http://support.wyse.com/selfservice.html>



Wyse

Dell Wyse offers cloud client  
computing sales, service and  
support expertise around the  
globe. Click for contact details.

## About Dell

Dell Inc. (NASDAQ: DELL) listens to customers and delivers  
innovative technology and services that give them the power  
to do more. For more information, visit [www.dell.com](http://www.dell.com)

©2012 The Dell Wyse logo and references are trademarks of Dell Wyse. Other product names mentioned herein are for identification  
purposes only and may be trademarks and/or registered trademarks of their respective companies. All specifications are subject to change  
without notice. Whilst we make every effort to ensure the accuracy of the details, specifications, models, images and benefits featured in  
this datasheet, we cannot be held responsible for any errors and/or omissions. If you have any queries regarding Dell Wyse products please  
contact your authorized regional Dell Wyse Partner. Some features require support by server operating system and protocol.

Start

Models

Features

Technical

Contact

Print

# Dell Wyse D class cloud clients.

## The new Dell Wyse D class: Strong, Compact, Affordable.

The range features dual core processors throughout with the D90D7 for Windows Embedded Standard 7, the D90DW for Windows Embedded Standard 2009, the D50D for Dell Wyse-enhanced SUSE Linux and the D00D for Dell Wyse WSM.\*

Designed to allow your users to flourish within ever changing and demanding desktop environments, the new Dell Wyse D class offers you new dimensions in computing performance, high definition multimedia and operational flexibility in a compact affordable form.

The D class' compact frame hosts an array of display, peripheral and network connectivity plus further flexible networking, storage and I/O options; everything in fact to offer you the ideal cloud client for Citrix, Microsoft and VMware VDI environments.

Dell Wyse Device Manager supports the D class with scalable enterprise-wide management. From fast 'day one' out-of-the-box deployment, to patching and updates and on to granular desktop device management – all with secure end-to-end encrypted communications.

When it comes to energy efficiency the D class is designed to out-perform other more power hungry desktop alternatives, including other thin clients in its class. Its silent, disk and fan-less design contributes considerably to lowering an organization's carbon footprint through power usage and emissions.

## High performance processor.

Need to deploy a dependable platform to display, manipulate and work with high definition multimedia, voice and video in a virtualized environment? The D class' hardware acceleration engine and dual monitor support offers your users outstanding performance and display capabilities across 2D, 3D and HD video applications.



## At a glance

### Performance

Driving the D class' high speed and performance is a powerful energy-saving AMD G-Series Dual core T48E 1.4 GHz processor, offering you a strong all around platform on which to support an increasingly diverse range of user, application and operating requirements.

### Connectivity

DVI-I interface with optional splitter cable enabling use of 2 monitors. Four USB 2.0 ports, Gigabit Ethernet connectivity and optional WiFi 802.11 a/b/g/n and Fiber NIC support.

### Management

Features Dell Wyse management software found on premium thin and zero clients. For customers that desire a little more hands-on approach (such as asset tracking, reporting, etc) then integration with Dell Wyse Device Manager is built-in.

### Multimedia performance

The D class offers your users outstanding performance and display capabilities across 2D, 3D and HD video applications.

### Green

Dell Wyse D class cloud clients use 9 watts of power in typical use\*\*. In comparison, a typical PC could use between 70 and 150 watts. Even in sleep mode Dell Wyse D class units draw just 2 watts while being fully remotely managed.

\* Check with [wyse.com](http://wyse.com) for availability of models.

\*\* Average power usage with device connected to 1 keyboard with 1 PS/2 mouse and 1 monitor: Under 9 Watts



# Specification

## Dell Wyse D class cloud clients

Operating System	Dell Wyse Windows® Embedded Standard 7, Windows® Embedded Standard 2009 or Dell Wyse-enhanced SUSE Linux Enterprise
Processor	AMD G-Series Dual core T48E 1.4GHz with AMD Radeon™ HD 6250 Graphics
Memory	D50D 2GB Flash / 2GB DDR3 RAM D90DW 2GB Flash / 2GB DDR3 RAM D90D7 4GB Flash / 2GB DDR3 RAM D00D 0GB Flash / 2GB DDR3 RAM Expandable up to 8GB Flash / 4GB DDR3 RAM
I/O peripheral support	One DisplayPort. (Optional DisplayPort to DVI-I adapter available) One DVI-I port. DVI to VGA (DB-15) adapter included Four External USB 2.0 ports (2 front; 2 back) Serial and Parallel connectivity supported through USB 2.0 adapters Enhanced USB Keyboard with Windows Keys (104 keys) and PS/2 mouse port. PS/2 Optical mouse included.
Networking	10/100/1000 Base-T Gigabit Ethernet RJ45 or SFP Module <b>Factory options:</b> Single and Dual Band 802.11 a/b/g/n integrated Wireless with external dual antenna SFP Module support for Fiber NIC network connectivity Bluetooth connectivity
Display	VESA monitor support with Display Data Control (DDC) for automatic setting of resolution and refresh rate DisplayPort: 2560x1600@32bpp DVI-I: 1920x1200@32bpp Dual display: 1920x1200@32bpp
Audio	Composite Audio Jack: 1/8-inch mini, 16-bit stereo. Internal Mono speaker.
Physical characteristics	Height: 6.7 inches (170mm) Width: 1.6 inches (40mm) Depth: 7.3 inches (185mm)
Weight	2.05 lbs. / 0.93 kg
Mountings	Vertical feet standard / Horizontal feet optional. Optional Dell Ergotron mounting bracket.
Device Security	Built-in Kensington security slot (cable sold separately)
Power	Worldwide auto-sensing 100–240 VAC, 50/60 Hz 65W, 19V DC. Energy Star V.5.0 Phase V external and EuP compliant power adapter Average power usage with device connected to 1 keyboard with 1 PS/2 mouse and 1 monitor: Under 9 Watts
Temperature Range	Operating: 32° to 104° F (10° to 40° C), horizontal and vertical positions. Storage: 14° to 140° F (-10° to 60° C)
Humidity	20% to 80% condensing / 10% to 95% non-condensing
Safety Certifications	German EKI-ITB 2000, ISO 9241-3/-8 cULus 60950, TÜV-GS, EN 60950 FCC Class B, CE, VCCI, C-Tick WEEE, RoHS Compliant
Warranty	Three-year limited Wyse hardware warranty



Learn more: Contact Dell Wyse at [sales@wyse.com](mailto:sales@wyse.com) or call 1-800-GET-WYSE

[wyse.com](http://wyse.com)

Dell Wyse  
3471 North First Street  
San Jose, CA 95134-1801

Visit our website at:  
<http://www.wyse.com>  
Or send email to: [sales@wyse.com](mailto:sales@wyse.com)

Dell Wyse Sales  
800 GET WYSE  
(800 438 9973)

Dell Wyse Customer Service Center:  
800 800 WYSE (800 800 9973)

