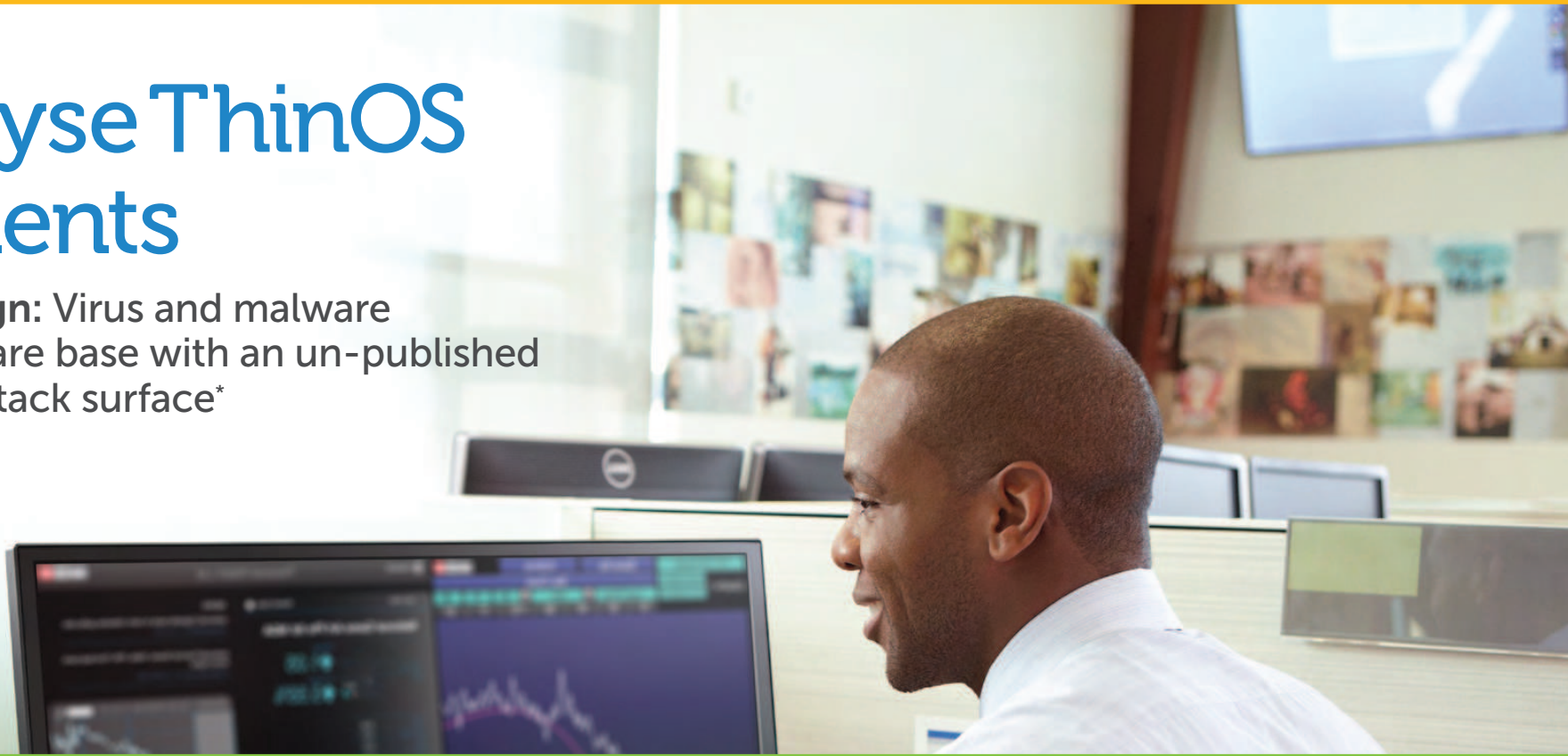




Dell Wyse ThinOS thin clients

Secure by design: Virus and malware immune firmware base with an un-published API and zero attack surface*



Dell Wyse ThinOS thin clients.
[Learn more. Here:](#)



* See appendix for notes and guidance.

Introducing Dell Wyse ThinOS thin client desktops

Secure simplicity on your desktop

A key component of Dell desktop virtualization product offerings and one of the most secure operating systems in the world for cloud and virtual computing environments, ThinOS is certified with Citrix, Microsoft®, VMware, Dell vWorkspace, and other ecosystem partners. Unlike Windows® and Linux, ThinOS was created just for virtual desktops with patented technology from Dell, the thin client leader with over 220 patents in this area. ThinOS is:

- **Secure by design:** Virus and malware immune* with an un-published API and zero attack surface
- **Secure by function:** Supports a robust 802.1x wired and wireless authentication spectrum of security protocols: from all EAP connection types to robust LAN based authentication including EAP-TLS
- **Fast:** Boots in under 10 seconds to secure desktops based on a variety of authentication methods, including single sign-on and 2-factor authentication.
- **Easy to manage:** Covers the everyday basics so you don't have to. IT can get out of the desktop hardware maintenance business
- **One of the best HDX and RDP experiences in a non-Windows client:** RDP 8.0 support and a custom Citrix 3.x receiver from Dell developed in collaboration with Citrix enable a rich user experience based on the latest HDX feature set, and outstanding ICA and RDP performance.

* See appendix for notes and guidance.

Dell Wyse ThinOS thin clients

ThinOS is available across a wide range of hardware form factors to suit your budget, application performance, and environmental needs—from highly affordable to high performance. The lineup includes the Dell Wyse thin client desktop C10LE, the Dell Wyse thin client desktop 3010-T10, the Dell Wyse thin client desktop 3012-T10D, the Dell Wyse thin client desktop 5012-D10D and the Dell Wyse 5212 all-in-one thin client.

Click the images to learn more.

Dell Wyse C10LE
Highly capable
and affordable

Dell Wyse 3010-T10
Strong performance,
small box

Dell Wyse 3012-T10D
Dual-core power,
compact design

Dell Wyse 5012-D10D
Top performance
for power users

Dell Wyse 5212 all-in-
one thin client. Secure,
powerful, and elegant

Additional software

Dell Wyse software options can further enhance the user experience or simplify IT management on ThinOS.

[Learn more here.](#)

[Quick compare](#)



[ThinOS Specifications](#)



Start

Introduction

Compare

Virtualization SW

Management SW

Specifications

Appendix

Contact

Dell.com

Quick compare Dell Wyse ThinOS hardware platforms

All Dell Wyse ThinOS thin clients are:

- Ultra-secure and extremely reliable with no moving parts
- Great to use and easy to manage, requiring no hardware maintenance whatsoever
- Ready to connect to Citrix, Microsoft®, VMware, and Dell vWorkspace right out of the box
- Ready to support wireless and dual displays



Dell Wyse C10LE



Dell Wyse 3010-T10



Dell Wyse 3012-T10D



Dell Wyse 5012-D10D



Dell Wyse 5212
all-in-one thin client

Highly capable

For task & office workers' everyday use, yet highly cost effective

The new standard for affordable thin clients

Great for common tasks plus multimedia acceleration and monitor rotation for an improved user experience with video

Dual-core power, compact design

Dual-core processor raises the compact thin client performance bar; great for knowledge workers and multimedia

Top performance for power users

Our flagship ThinOS platform for power users and knowledge workers: ideal for unified communications, HD multimedia, 3D graphics, and content creation; dual digital displays

Dell Wyse 5212 all-in-one thin client

a stylish integrated thin client and 21.5" display. It is the most secure all-in-one on the planet and delivers an excellent virtual desktop experience, with extreme ease of use & management



Start

Introduction

Compare

Virtualization SW

Management SW

Specifications

Appendix

Contact

Dell Wyse C10LE thin client Features

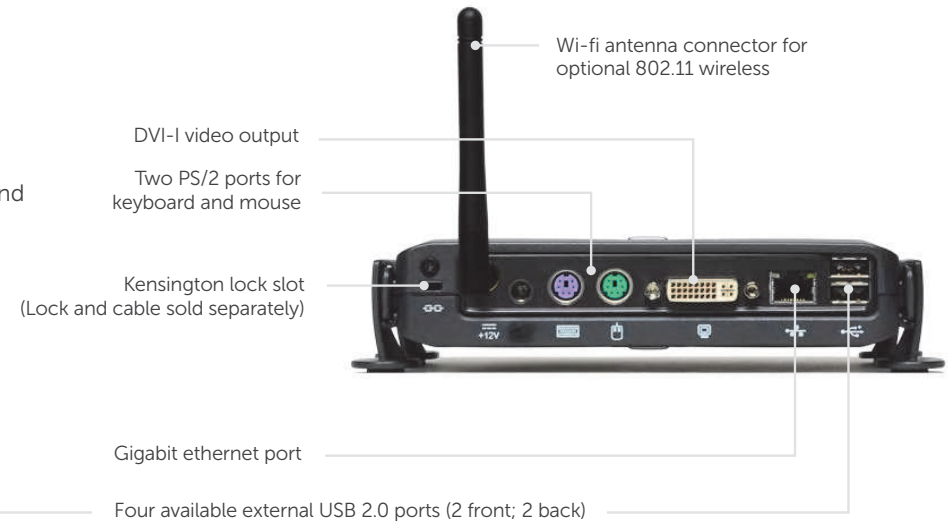
Task-specific affordable performance

The C10LE is a highly capable and affordable thin client for task workers who consume and edit content and who need word processing and internet access. The VIA Eden 1GHz processor offers excellent performance at a cost-effective price.

The C10LE's small size enables discrete mounting options: under desks, to walls, and behind monitors. Operating with fewer than 7 watts of electricity, the C10LE's energy efficient performance and cool, quiet operation can reduce costs and environmental impacts.



Audio in: 1/8-inch mini jack, 8 bit stereo microphone Audio out: 1/8-inch mini jack, 16 bit stereo



[Product page](#) 

[Specifications](#) 

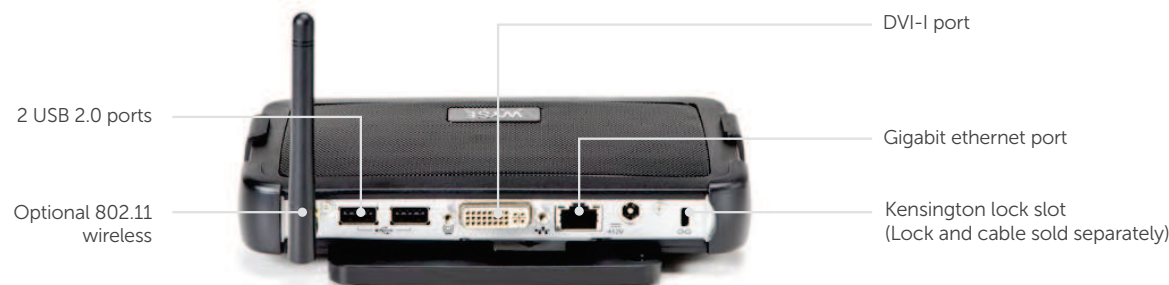


Dell Wyse thin client desktop 3010-T10 Features

For task workers who need video

The 3010-T10 handles everyday tasks with ease and also provides multimedia acceleration for task workers who need video. Users will enjoy integrated graphics processing and additional WMV & H264 video decoding capabilities from the Marvell ARMADA™ PXA 510 v7 1.0 GHz System-on-Chip (SoC). In addition, the 3010-T10 is one of the only affordable thin clients to support dual monitors with monitor rotation, enabling increased productivity by providing an extensive view of task work.

Designing smooth playback of high bit-rate HD video and graphics in such a small box hasn't been at the expense of energy consumption and heat emissions either. Using just 7 watts of electricity earns this device an Energy Star V5.0 rating. In addition, the 3010-T10's small size enables discrete mounting options: under desks, to walls, and behind monitors, creating cool workspaces in every respect.



[Product page](#) 

[Specifications](#) 



Start

Introduction

Compare

Virtualization SW

Management SW

Specifications

Appendix

Contact

Dell.com

Dell Wyse thin client desktop 3012-T10D Features

For knowledge workers and HD multimedia

The 3012-T10D with dual-core processing power is designed for knowledge workers with a variety of application needs, including HD multimedia. Users will benefit from Citrix HDX 3D and Microsoft RemoteFX graphics quality and additional WMV & H264 video decoding capabilities from the Marvell ARMADA™ dual-core PXA2128 1.2 GHz System-on-Chip (SoC). In addition, the 3012-T10D supports dual digital displays with monitor rotation and 802.11 a/b/g/n dual band, dual antenna WiFi.

All of this performance comes in an extremely compact and efficient offering. The 3012-T10D uses just 7 watts of electricity earning this device an Energy Star V5.0 rating. In addition, the 3012-T10D's small size enables discrete mounting options: under desks, to walls, and behind monitors, creating cool workspaces in every respect.

802.11 a/b/g/n dual band,
dual antenna WiFi

3 USB 2.0 ports

Audio: Composite
1/8-inch mini jack



Gigabit ethernet port

DVI-I port

DVI-D port

USB 2.0 port

802.11 a/b/g/n dual band,
dual antenna WiFi



[Product page](#)



[Specifications](#)



Start

Introduction

Compare

Virtualization SW

Management SW

Specifications

Appendix

Contact

Dell.com

Dell Wyse thin client desktop 5012-D10D Features

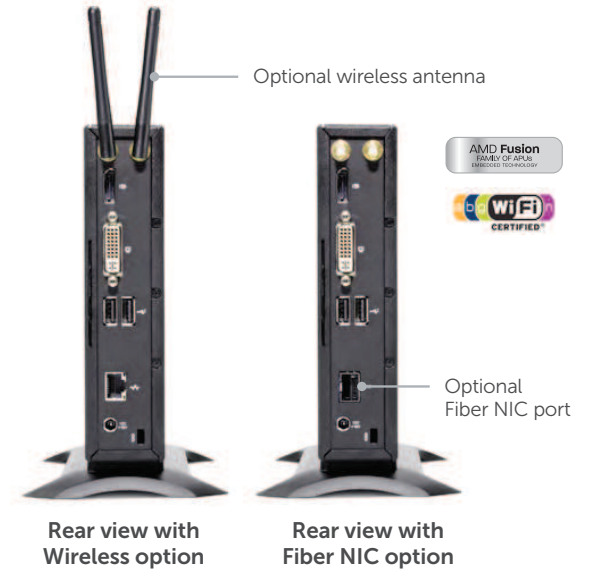
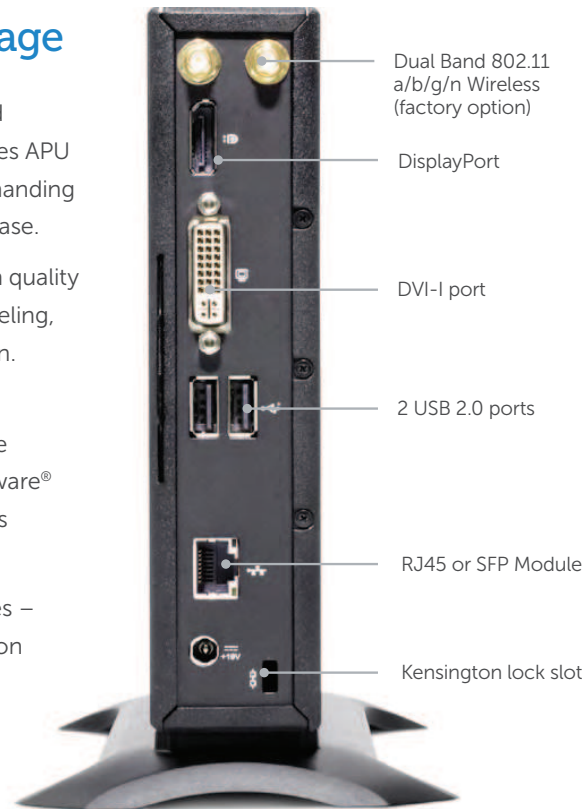
Ultra-high performance in a compact package

Power users and knowledge workers will love the exceptionally fast speed and power from the new dual-core driven 5012-D10D. With a 1.4 GHz AMD G series APU with integrated graphics engine, the 5012-D10D handles everything from demanding multimedia applications to business content creation and consumption with ease.

The 5012-D10D even supports power users' most demanding workloads: high quality audio and video, unified communications, CAD/CAM, 3D simulation and modeling, HD Flash and multimedia, and dual digital high resolution displays with rotation.

Users will enjoy smooth roaming and super fast 802.11 a/b/g/n wireless at 2.4 and 5 GHz with dual antennas. The 5012-D10D is Citrix HDX, Microsoft® RemoteFX, and VMware® Horizon View certified. It also supports legacy peripherals via an optional USB adapter.

Averaging 9 watts, each and every 5012-D10D contributes – quietly and coolly – to lowering your organization's carbon footprint, with reduced power usage and emissions.



[Product page](#) 

[Specifications](#) 



Dell Wyse 5212 all-in-one thin client Features

Ultra Secure and high performance in a sleek stylish form factor

The Dell Wyse 5212 all-in-one is a stylish integrated thin client and 21.5" display. It is the most secure all-in-one and delivers an excellent virtual desktop experience, with extreme ease of use & management.

Secure: Zero attack surface for complete immunity to viruses and malware. Cryptographically protect sensitive information. AES disk encryption.

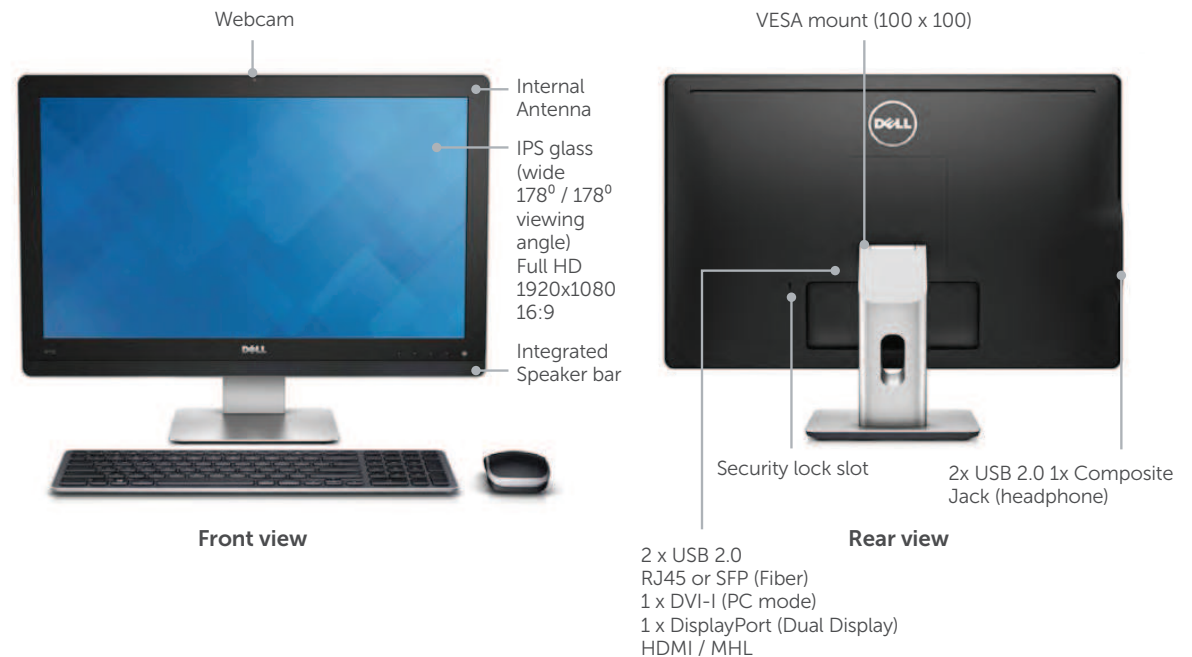
Elegantly simple: Sleek industrial design, small footprint, one power cord make it appealing to both customers and users. ThinOS and integrated display form factor make it easier to deploy and manage.

Powerful: AMD G Series dual core 1.4GHz processor, along with ThinOS, deliver high speed and power to deliver rich graphics

Well-connected: Gigabit Ethernet, optional integrated dual band Wi-Fi optional SFP fiber, speakers, camera, microphone 4 USB 2.0 ports.

Ready to connect to Citrix, Microsoft®, VMware, and Dell vWorkspace right out of the box.

Easy-to-manage: Right sized management for different use cases, on premise with "hands off" file server, or Dell Wyse Device Manager, or cloud-based with Dell Wyse Cloud Client Manager. Scalable administration for just a few to tens of thousands of thin client AIOs.



[Specifications](#) 



Start

Introduction

Compare

Virtualization SW

Management SW

Specifications

Appendix

Contact

Dell.com

Dell Wyse Virtualization Software

A great user experience for both everyday and demanding workloads

Dell Wyse ThinOS thin clients offer an outstanding user experience out of the box. For users with demanding multimedia, performance, and remote access needs, Dell Wyse offers the following virtualization software packages.

Dell Wyse TCX Suite

Boost multimedia performance on Dell Wyse cloud clients without taxing your server resources.

[→ Learn more here.](#)

Dell Wyse Virtual Desktop Accelerator

Improve the experience for remote users with enhanced WAN performance.

[→ Learn more here.](#)



ThinOS Specifications



Start

Introduction

Compare

Virtualization SW

Management SW

Specifications

Appendix

Contact

Dell.com

Dell Wyse Device Management

Hands-off management

Dell Wyse ThinOS requires zero external management software to operate, update and scale, eliminating the need for IT to visit or touch the physical devices.

Management Software

As the number of devices grows, Dell Wyse offers highly scalable management software products that offer process automation, insight, and low TCO for large deployments of Dell Wyse cloud clients.

Dell Wyse Device Manager

A powerful thin and zero client management solution, Dell Wyse Device Manager (WDM) software provides easy, secure, highly scalable, centralized cloud client management for your small organization or global enterprise. WDM provides:

- Centralized management for over 100,000 clients all in one place, regardless of where they are located
- Policy-based configuration management, real-time asset management, automated firmware updates, and health monitoring make managing cloud clients easy
- Security - WDM complements the security of ThinOS with secure, encrypted communications to every endpoint

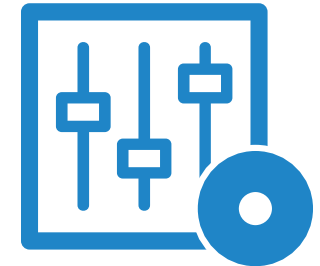
[→ Learn more here.](#)

Dell Wyse Cloud Client Manager

Simple, secure client infrastructure management from the cloud. Securely manage user access to corporate applications and content for a wide range of company and employee-owned devices through an intelligent, unified cloud-based console. Finally, IT can manage smartphones, tablets, and cloud clients all in one place.

In addition, cloud client manager goes beyond standard device management solutions by providing a complete view of not only devices, but also into all the IT assets accessed by these devices. Complete visibility of users, devices, and the entire IT ecosystem – combined with a world-class analytics engine – provides invaluable insight into usage models and trends, and helps to identify areas of investment to securely and effectively provide corporate services to end users.

[→ Learn more here.](#)



[ThinOS Specifications](#)



Start

Introduction

Compare

Virtualization SW

Management SW

Specifications

Appendix

Contact

Dell.com

Dell Wyse ThinOS Specifications

Citrix Receiver 3.x compatible	<ul style="list-style-type: none"> - Native Storefront authentication - HDX Mediastream - HDX 3D, HDX 3D Pro - Bandwidth estimation - Seamless Windows - Progressive display - Local text echo (zero latency click) - Optimized 2D drawing - Flash (server rendered) - Smartcard / proximity card authentication & redirection - Citrix Access Gateway and Citrix Secure Gateway support (direct LDAP or RSA authentication) - Monitor rotation and L-shaped desktop 	<ul style="list-style-type: none"> - HDX multi-stream - HDX Plug-n-Play - HDX Realtime - UDP Audio - Session reliability - Desktop restart (XenDesktop) - Session prelaunch and lingering - User roaming - Cloud Gateway (branch repeater) 	Dell Wyse TCX Suite	<p>Dell Wyse TCX Suite virtualization software works with and enhances HDX and RDP protocols featuring:</p> <ul style="list-style-type: none"> - Terminal Server/XenApp session level restriction - Support for USB Interface level redirection - Multimedia: giving users the power to run rich multimedia file formats - Multi-Display: windows and dialog boxes behave the way users expect across multiple displays - USB Virtualizer: client attached USB devices are visible to virtual desktops applications, and administrators, even on terminal servers - Rich Sound – receive and transmit high quality audio without compromise - Flash Acceleration: helps users to experience improved Flash performance
RDP 8.0 compatible client	<ul style="list-style-type: none"> - Multi-stream (simultaneous UDP and TCP connections) - RemoteFX USB redirection - Multi Codec (GFX) - VOR (H.264 multimedia redirection) - Load balancing - Multiple monitor support - Copy/paste by files between sessions - Web Single Sign-On (SSO) and web forms-based authentication - RD Connection Broker - Personal virtual desktops and virtual desktop pools 	<ul style="list-style-type: none"> - Terminal Server Gateway - Enhanced video playback - Windows® Media Player redirection - Bandwidth estimation - Bidirectional audio 	Dell Wyse Virtual Desktop Accelerator	<p>Neutralizes the effects of network latency and packet loss, making 'thin' more suitable for more remote-site, branch, or field-based users by boosting RDP and ICA performance up to 20 times on networks with latencies up to and exceeding 300ms and at least 768kbps bandwidth.</p>
VMware View 5.2 client	<ul style="list-style-type: none"> - Smartcard Authentication - SecureID Authentication - Multimedia Support (with TCX) - Bi-directional Audio (with TCX) - WAN Acceleration (with VDA) 	<ul style="list-style-type: none"> - SSL Tunneling - Restart VM - Broad USB Support (with TCX) - Flash Video Support (with TCX) 	Integrated with Dell Wyse management software	<p>Fast booting, scalable administration includes simple drag and drop placement of firmware, automatic updates via file server and full integration with Dell Wyse Device Manager and Dell Wyse Cloud Client Manager. This provides simple, secure, unified cloud-based management of company and employee owned smartphones, tablets, and cloud clients.</p>
Smart/proximity card support	<p>Out of the box smart / proximity card support for single sign-on, secure log-in, and roaming desktops. Supported smart cards:</p> <ul style="list-style-type: none"> - Gemalto .NET/IDPrime .NET (V1, V2) - HID ActiveIdentity (DoD CAC, PIV, SIPR) - G&D StarCos <p>Authentication types:</p> <ul style="list-style-type: none"> - Imprivata One-Sign server 	<ul style="list-style-type: none"> - Aladdin Etoken - Cryptovision 	Security built in	<ul style="list-style-type: none"> - A non-Linux and non-Windows based, closed OS with an unpublished API, Dell Wyse ThinOS is inherently secure from viruses and malware - Dell Wyse ThinOS includes robust wired and wireless 802.1x support, with secure encryption: EAP-TLS; EAP-LEAP; EAP-PEAP; EAP-MSCHAPv2, EAP-GTC; WEP; WPA Personal; WPA2 Personal; WPA Enterprise; WPA2 Enterprise - DoD CAC, PIV & SIPR supported - Although there is no local file system, certifications and configuration data can be stored for high availability. Leveraging AES 128 bit disk encryption, with a random number generator, local settings will be secure
			Server OS Infrastructure support	<ul style="list-style-type: none"> - Citrix XenDesktop 4.0 – 7.0 - VMware View 4.0 – 5.2 - Citrix XenApp 4.5 – 6.5 - Microsoft® Windows Terminal Server 2003, 2008/R2, & 2012 - Support for other leading VDI brokers (Deskstone, Leostream, etc) - Citrix Presentation Server - Dell vWorkspace (Quest Software)



Start	Introduction	Compare	Virtualization SW	Management SW	Specifications	Appendix	Contact
-------	--------------	---------	-------------------	---------------	----------------	----------	---------

Dell Wyse C10LE Specifications

Processor	VIA Eden 1 GHz
Memory	128 MB Flash / 512 MB RAM DDR2
Graphics	VIA VX855
Display	VESA monitor support with Display Data Control (DDC) for automatic setting of resolution and refresh rate. Single: up to 1920x1200@60Hz; color depth: 8, 15, 16, 24 or 32 bpp Dual: up to 1920x1200@60Hz; color depth: 8, 15, 16, 24 or 32 bpp Supports dual high-resolution displays. Dual displays require optional monitor splitter cable (sold separately). Dual displays with the optional splitter cable provide 1 digital display and 1 analog display.
Networking/Comm	10/100/1000 Base-T Gigabit Ethernet. Optional internal wireless 802.11 b/g/n (single antenna) or Optional 802.11 a/b/g/n internal wireless (dual-band, dual antenna; this configuration provides 2 front USB ports and no rear USB ports).
Security compliance	Security protocols supported for both wireless and 802.1x network based authentication: EAP-TLS; EAP-LEAP; EAP-PEAP, EAP-MSCHAPv2, EAP-GTC; WEP; WPA Personal; WPA2 Personal; WPA Enterprise; WPA2 Enterprise.
I/O peripheral support	One DVI-I port, DVI to VGA (DB-15) adapter included. Dual-video support with optional DVI-I to DVI-D plus VGA-monitor splitter cable (sold separately). Four USB 2.0 ports (2 on front, 2 on back) / Two PS/2 ports.
Audio	Output: 1/8-inch mini jack, full 16-bit stereo, 48KHz sample rate. Input: 1/8-inch mini jack, 8-bit microphone.
Included	Enhanced PS/2 keyboard with Windows keys (104 keys). PS/2 or USB optical mouse included (varies by region).
Factory options	Internal wireless 802.11 b/g/n (single antenna) or 802.11 a/b/g/n internal wireless (dual-band, dual antenna; this configuration provides 2 front USB ports and no rear USB ports).

Mountings	Horizontal stand. Optional VESA mounting bracket.
Device security	Built-in Kensington security slot (cable sold separately).
Dimensions	Height: 1.38 in (34 mm) Width: 6.94 in (177 mm) Depth: 4.75 in (121 mm) Weight: 1.34 lbs (610 g)
Shipping weight	6 lbs (2.7 kg)*
Power	Worldwide auto-sensing 100-240 VAC, 50/60 Hz. Energy Star V.5.0 compliant power supply.
Power consumption	Average power usage with device connected to 1 keyboard with 1 PS/2 mouse and 1 monitor: under 7 watts.
Temperature range	Horizontal position: 50° to 95° F (10° to 35° C) Vertical position, power button up: 50° to 104° F (10° to 40° C) Storage: 14° to 140° F (-10° to 60° C)
Humidity	20% to 80% condensing. 10% to 95% non-condensing.
Certifications	Ergonomics: German EKI-ITB 2000, ISO 9241-3/-8 Safety: cULus 60950, TÜV-GS, EN 60950 RF Interference: FCC Class B, CE, VCCI, C-Tick Environmental: WEEE, RoHS Compliant Energy Star® compliant, EPEAT Silver.
Warranty	Three-year limited hardware warranty. Optional WyseChoice extensions and upgrades at www.wyse.com/warranties .
	* See appendix for notes and guidance.



**C10LE
Features**



Start	Introduction	Compare	Virtualization SW	Management SW	Specifications	Appendix	Contact
-------	--------------	---------	-------------------	---------------	----------------	----------	---------

Dell.com

Dell Wyse 3010-T10 Specifications

Processor	Marvell® ARMADA™ PXA 510 v7 1.0 GHz system-on-chip (SoC)
Memory	0 MB Flash / 1 GB RAM DDR3
Graphics	Integrated in SoC
Display	VESA monitor support with Display Data Control (DDC) for automatic setting of resolution and refresh rate. Single: up to 1920x1200@60Hz; color depth: 32 bpp Dual: up to 1920x1200@60Hz; color depth: 32 bpp Supports dual high-resolution displays. Dual displays also support monitor rotation ("L shaped" displays). Dual displays require optional monitor splitter cable (sold separately). Dual displays with the optional splitter cable provide 1 digital display and 1 analog display.
Networking/Comm	10/100/1000 Base-T Gigabit Ethernet. Optional 802.11 b/g internal wireless (single antenna).
Security compliance	Security protocols supported for both wireless and 802.1x network based authentication: EAP-TLS; EAP-LEAP; EAP-PEAP; EAP-MSCHAPv2; EAP-GTC; WEP; WPA Personal; WPA2 Personal; WPA Enterprise; WPA2 Enterprise.
I/O peripheral support	One DVI-I port, DVI to VGA (DB-15) adapter included. Dual display support with optional DVI-I to DVI-D plus VGA-monitor splitter cable (sold separately). Four USB 2.0.
Audio	Output: 1/8-inch mini jack, full 16-bit stereo, 48KHz sample rate. Input: 1/8-inch mini jack, 8-bit microphone.
Included	Enhanced USB keyboard with PS/2 mouse port and Windows keys. PS/2 or USB optical mouse included (varies by region).
Factory options	802.11 b/g internal wireless (single antenna).

Mountings	Horizontal stand. The same stand can be used for VESA wall mounting. Optional vertical stand.
Device security	Built-in Kensington security slot (cable sold separately).
Dimensions	Height: 1 in (25 mm) Width: 6.9 in (177 mm) Depth: 4.69 in (119 mm) Weight: 1 lb (450 g)
Shipping weight	1.003 lbs. (0.455 kg)*
Power	Worldwide auto-sensing 100-240 VAC, 50/60 Hz. Energy Star V5.0. Phase V external and EuP compliant power adapter.
Power consumption	Average power usage with device connected to 1 keyboard with 1 PS/2 mouse and 1 monitor: under 7.2 watts.
Temperature range	Horizontal position: 50° to 95° F (10° to 35° C) Vertical position, power button up: 50° to 104° F (10° to 40° C) Storage: 14° to 140° F (-10° to 60° C)
Humidity	20% to 80% condensing. 10% to 95% non-condensing.
Certifications	Ergonomics: German EKI-ITB 2000, ISO 9241-3/-8 Safety: cULus 60950, TÜV-GS, EN 60950 RF Interference: FCC Class B, CE, VCCI, C-Tick Environmental: WEEE, RoHS Compliant.
Warranty	Three-year limited hardware warranty. Optional WyseChoice extensions and upgrades at www.wyse.com/warranties .
	* See appendix for notes and guidance.



**3010-T10
Features**



Start	Introduction	Compare	Virtualization SW	Management SW	Specifications	Appendix	Contact
-------	--------------	---------	-------------------	---------------	----------------	----------	---------

Dell.com

Dell Wyse 3012-T10D Specifications

Processor	Marvell® ARMADA™ Dual Core PXA2128 1.2 GHz system-on-chip (SoC)
Memory	4GB Flash / 2GB DDR3 RAM
Graphics	Integrated in SoC, including support for Citrix HDX 3D and Microsoft RemoteFX
Display	Single: up to 1920x1200@60Hz; color depth: 8, 16, 25, or 32 bpp Dual: up to 1920x1200@60Hz; color depth: 8, 16, 25, or 32 bpp Dual monitor supported with display rotation ("L shaped" displays) VESA monitor support with Display Data Control (DDC) for automatic setting of resolution and refresh rate.
Networking/Comm	10/100/1000 Base-T Gigabit Ethernet. Optional 802.11 a/b/g/n internal wireless, dual radio and dual antenna @ 300 Mbps
Security compliance	Security protocols supported for both wireless and 802.1x network based authentication: EAP-TLS; EAP-LEAP; EAP-PEAP, EAP-MSCHAPv2, EAP-GTC; WEP; WPA Personal; WPA2 Personal; WPA Enterprise; WPA2 Enterprise.
I/O peripheral support	One DVI-I port, DVI to VGA (DB-15) adapter included. One DVI-D port. Native dual digital display support with DVI-I and DVI-D ports. Four USB 2.0 ports, 3 in front, 1 in back.
Audio	Composite audio jack: 1/8-inch mini, 16-bit stereo. Internal mono speaker.
Included	Enhanced USB keyboard with PS/2 mouse port and Windows keys. PS/2 or USB optical mouse included (varies by region).
Factory options	802.11 a/b/g/n internal wireless (dual band, dual antenna at 300Mbps).

Mountings	Horizontal stand. The same stand can be used for VESA wall mounting.
Device security	Built-in Kensington security slot (cable sold separately).
Dimensions	Height: 1.38 in (35 mm) Width: 6.94 in (176 mm) Depth: 4.75 in (121 mm)
Shipping weight	1.1 lbs. (0.5 kg)
Power	Worldwide auto-sensing 100-240 VAC, 50/60 Hz. Energy Star V5.0. Phase V external and EuP compliant power adapter.
Power consumption	Average power usage with device connected to 1 keyboard with 1 PS/2 mouse and 1 monitor: under 7.2 watts.
Temperature range	Horizontal position: 50° to 95° F (10° to 35° C) Vertical position, power button up: 50° to 104° F (10° to 40° C) Storage: 14° to 140° F (-10° to 60° C)
Humidity	20% to 80% condensing. 10% to 95% non-condensing.
Certifications	Ergonomics: German EKI-ITB 2000, ISO 9241-3/-8 Safety: cULus 60950, TÜV-GS, EN 60950 RF Interference: FCC Class B, CE, VCCI, C-Tick Environmental: WEEE, RoHS Compliant.
Warranty	Three-year limited hardware warranty. Optional WyseChoice extensions and upgrades at www.wyse.com/warranties .



**3012-T10D
Features**



Start	Introduction	Compare	Virtualization SW	Management SW	Specifications	Appendix	Contact
-------	--------------	---------	-------------------	---------------	----------------	----------	---------

Dell Wyse 5012-D10D Specifications

Processor	AMD G-Series T48E Dual Core 1.4GHz
Memory	2GB Flash / 2GB RAM DDR3-1066MHz
Graphics	Radeon HD 6250
Display	VESA monitor support with Display Data Control (DDC) for automatic setting of resolution and refresh rate DisplayPort: 2560x1600@32bpp DVI-I: 1920x1200@32bpp Dual display: 1920x1200@32bpp Supports dual digital high-resolution displays Dual displays also support monitor rotation ("L shaped" displays)
Networking/Comm	10/100/1000 Base-T Gigabit Ethernet Optional single and dual band 802.11 a/b/g/n integrated wireless with external dual antenna Optional SFP Module support for Fiber NIC network connectivity
Security compliance	Security protocols supported for both wireless, and 802.1x network based authentication: EAP-TLS; EAP-LEAP; EAP-PEAP, EAP-MSCHAPv2, EAP-GTC; WEP; WPA Personal; WPA2 Personal; WPA Enterprise; WPA2 Enterprise
I/O peripheral support	One DisplayPort. (Optional DisplayPort to DVI-I adapter available) One DVI-I port. DVI to VGA (DB-15) adapter included Four external USB 2.0 ports (2 front, 2 back) Serial and parallel connectivity supported through USB 2.0 adapters
Audio	Composite audio jack: 1/8-inch mini, 16-bit stereo Internal mono speaker
Included	Enhanced USB keyboard with Windows keys (104 keys) and PS/2 mouse port PS/2 or USB optical mouse included (varies by region).
Factory options	Single and dual band 802.11 a/b/g/n integrated wireless with external dual antennas SFP Module support for Fiber NIC network connectivity

Mountings	Vertical foot, included Optional VESA mounting bracket Optional Ergotron mounting bracket
Device security	Built-in Kensington security slot (cable sold separately)
Dimensions	Height: 6.7 inches (170mm) Width: 1.6 inches (40mm) Depth: 7.3 inches (185mm) Weight: 2.05 lbs. / 0.93 kg
Power	Worldwide auto-sensing 100-240 VAC, 50/60 Hz 65W, 19V DC. Energy Star® V.5.2 Phase V external and EuP compliant power adapter
Power consumption	9 watts (average)
Temperature range	Operating, vertical position: 50° to 104° F (10° to 40° C) Storage: 14° to 140° F (-10° to 60° C)
Humidity	20% to 80% condensing 10% to 95% non-condensing
Safety Certifications	Ergonomics: German EKI-ITB 2000, ISO 9241-3/-8 Safety: cULus 60950, TÜV-GS, EN 60950 RF Interference: FCC Class B, CE, VCCI, C-Tick Environmental: WEEE, RoHS Compliant. ENERGY STAR Certified
Warranty	Three-year limited hardware warranty. Optional WyseChoice extensions and upgrades at www.wyse.com/warranties .
	* See appendix for notes and guidance.



5012-D10D Features



Start	Introduction	Compare	Virtualization SW	Management SW	Specifications	Appendix	Contact
-------	--------------	---------	-------------------	---------------	----------------	----------	---------

Dell Wyse 5212 all-in-one thin client Specifications

Processor/Chipset	AMD G-Series T48E Dual Core 1.4GHz	
Memory	2GB Flash / 2GB RAM	
Display	54.61 cm (21.5 inches) / Full HD 1920 x 1080 at 60 Hz (Primary and dual monitor)	
Networking/Comm	10/100/1000 RJ-45 Ethernet or SFP Fiber Optional – 802.11 a/b/g/n integrated wireless Ethernet with dual-band antenna.* Fiber SFP (Mutually exclusive with RJ-45 Ethernet)	
I/O peripheral support	4 USB 2.0 ports 1 RJ45 1 SFP fiber (optional) 1 VGA 1 DisplayPort Mic in / Audio out HD web cam (integrated) Speaker bar (integrated)	
Management	Unified cloud-based endpoint management Dell Wyse Device Manager Dell Wyse Cloud Client Manager	
Protocols (Pre installed)	Citrix ICA, HDX 3D & 3D Pro, Microsoft RDP 8.0, VMware (RDP) view 5.2, and vWorkspace	
Included	Dell Wyse thin client all-in-one 5212 Enhanced USB keyboard (US) DJ454 USB optical mouse (US) 11D3V	
Optional accessories (sold separately)	Headset Jabra UC 550 Duo Wireless Keyboard & Mouse Printer C2660dn Dual UZ2215H Monitor	Dell Part# A7371144 Dell Part# 332-1396 Dell Part# 210-ABPD Dell Part# 861-BBDD

Power	Dell Dual Monitor Stand 30 watts	Dell Part# 332-1236
Dimensions	Display with stand Width: 531mm (20.9 in) Depth: 181mm (7.1 in) Height: 408mm (16.0 in) Display without stand Width: 531mm (20.9 in) Depth: 45mm (1.8 in) Height: 343mm (13.5 in) Fixed Stand Width: 191mm (7.5 in) Depth: 181 mm (7.1 in) Height: 315mm (12.4 in)	
Weight	With packaging With stand assembly & cables Without stand assembly Stand	6.78kg (14.92lb) 5.4kg (11.88lb) 3.58kg (7.88lb) 1.02kg (2.24lb)
Warranty	Three year limited warranty. Optional one, two, and five year warranties.	
	* Not available in all countries.	



5212
Features



Start	Introduction	Compare	Virtualization SW	Management SW	Specifications	Appendix	Contact
-------	--------------	---------	-------------------	---------------	----------------	----------	---------

Appendix

Dell Wyse ThinOS is virus and malware immune

It is technically impossible for a virus to attach to Dell Wyse ThinOS or the Dell Wyse thin client on which it resides. It consists of a networking and protocol stack and is not a general-purpose operating system. Therefore, it has zero exposed API's and no local file system or other potentially vulnerable exposures to exploit.

Product weights

Product weights stated may vary depending on configuration and manufacturing variability.

Key facts about ThinOS



Secure: virus and malware immune



High performance: light weight firmware base about the size of a digital photograph has minimal overhead



Instant-on: from power-on to productive in **under 10 seconds**



Easy to manage: automatic 'hands-off' management, on-premise with Dell Wyse Device Manager, or cloud-based with Dell Wyse Cloud Client Manager



Scales to over 100,000 managed devices with Dell Wyse WDM software



Start

Introduction

Compare

Virtualization SW

Management SW

Specifications

Appendix

Contact

Contact Dell cloud client-computing



For sales, service and support expertise around the globe

Dell cloud client-computing

One Dell Way
Round Rock, TX 78664

Visit our website at:

www.dell.com/cloudclientcomputing

Dell Wyse Sales

1-800-438-9973

Dell cloud client-computing support portal

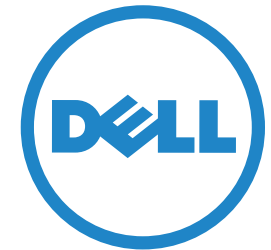
Dell Wyse Support Portal provides a fast and accurate way to communicate interactively with Dell Wyse Customer Support, and helps us respond to your requests more quickly.

www.support.wyse.com/selfservice.html

Dell Inc.

One Dell Way, Round Rock, TX 78664
Telephone: 1-800-456-3355

www.dell.com



Dell cloud client-computing

Any user. Any app. Any device.
Build or buy a custom or proven, pre-tested solution from Dell.

With **Dell cloud client-computing** you're covered from the data center to the end user device. For additional Dell products and solutions that complement your Dell Wyse ThinOS-based thin clients, visit:

Dell Monitors: www.dell.com/monitors

Dell Desktop Virtualization Solutions:
www.dell.com/cloudclientcomputing

About Dell

Dell Inc. (NASDAQ: DELL) listens to customers and delivers innovative technology and services that give them the power to do more. For more information, visit www.dell.com

©2014 The Dell logo and references are trademarks of Dell Inc. Other product names mentioned herein are for identification purposes only and may be trademarks and/or registered trademarks of their respective companies. All specifications are subject to change without notice. While we make every effort to ensure the accuracy of the details, specifications, models, images and benefits featured in this datasheet, we cannot be held responsible for any errors and/or omissions. If you have any queries regarding Dell Wyse products please contact your authorized regional Dell Partner. Some features require support by server operating system and protocol.
Approved final 020514



Start

Introduction

Compare

Virtualization SW

Management SW

Specifications

Appendix

Contact

Dell.com